



**UNIFILL**

LEADING THERMOFORMING TECHNOLOGY



EVERY DAY  
**MILLIONS**  
OF PEOPLE

CHOOSE THE UNIT-DOSES  
PRODUCED WITH OUR MACHINES

**UNIFILL**  
LEADING THERMOFORMING TECHNOLOGY

for their **future**

# MONODOSE | KIDS SNACK | PORTION PACK | UNIT DOSE

# BENEFITS

The packages produced with UNIFILL technology drastically reduce the size of the container and the environmental impact. UNIFILL is a world leader in the manufacturing of equipment for the production of single-doses made of laminated plastic material and innovative eco-friendly materials.

The technological flexibility, being UNIFILL able to create countless shapes, offers to our customers several advantages to satisfy the continuous market needs. Our goal is to surprise and amuse also the most demanding marketing experts. Even after 40 years, the single-dose still remains an innovative product thanks to its benefits in the logistics and to the significant reduction of the empty spaces. UNIFILL technology allows its customers to save energy, reduce packaging materials, transport costs and storage spaces.

## Printed packaging

Printed containers to protect the product from the light inside the package - in case of photosensitive products - and personalization of the package with graphics and/or labels.

## Cost Saving

With our technology you can reduce raw material consumption and we can help you in costs and time saving.

## Packaging with stick

Possibility to realize a packaging with symmetrical or asymmetrical sticks for Dairy and Confectionery applications.

## Controlled dosing

With our containers it is possible to use only the necessary quantity of product without any waste.

## Optimized packaging

Optimization of the secondary packaging compared to large containers.

## Child-proof container

No caps thanks to the "snap-off" opening method.

## Tailor-Made Packaging

Possibility to obtain tailor-made and exclusive shapes to enhance your brand and to satisfy Marketing needs.

## Transparent Packaging

Transparent packaging to give more value to the product inside the container or to show its integrity.

## Safety

The product is not subject to contamination and the rigid / semi-rigid / weatherproof container resists crushing.

## Minimum space

Space saving, especially when outside and when travelling, and use of the single dose only when it is needed.

## Easy and intuitive packaging

That does not require cutting tools for its opening.

## Material saving

The unit-dose greatly reduces material consumption minimizing the waste.

## Less Weight

UNIFILL technology allows to eliminate empty spaces and to reduce both the weight and the carbon footprint of the transport towards your customers.

## Stand-up Packaging

Possibility to obtain customized and stand-up packaging similar to a small bottle or to replicate your primary packaging.

## Less Energy

Possibility to produce a unit-dose made of eco-friendly material (PET mono-material or 90% Paper-based material) with low environmental impact.

## Packaging with straw

Ideal for liquid products. Thanks to a straw perfectly sealed to the container (@ UNIFILL patented system) that allows the direct use to the end-consumer, this package guarantees a perfect seal, hygiene and protection from the external contaminations.





## VISION

UNIFILL is committed to design and manufacture a **future of safe, sustainable and affordable portion-packs technologies** available to anyone, anywhere.

## MISSION

We regularly co-operate with our customers to provide **innovative and sustainable technical solutions** to satisfy the current and the future needs of the Food and the Non-Food Industry.



for their **fun**

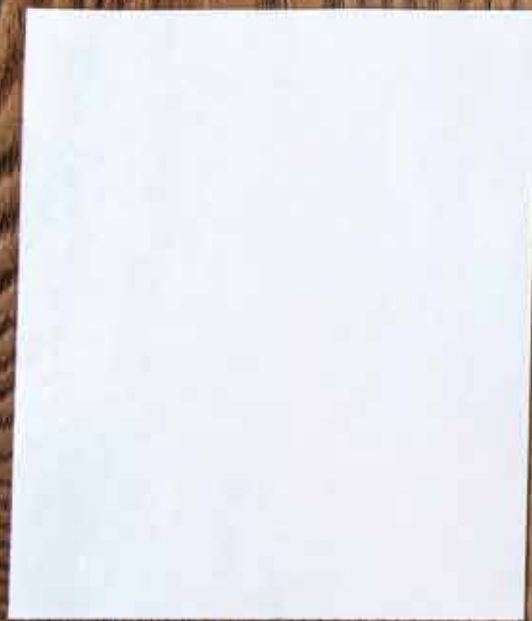


OVER  
**400**  
MACHINES INSTALLED  
**ALL OVER THE WORLD**  
SINCE 1979

# 100% TAILOR-MADE SOLUTIONS

Innovation has always been an integral part of UNIFILL business and culture. Our business model focuses on developing new technologies, products and solutions. UNIFILL works closely with its customers to understand their present and future needs by offering flexible and sustainable technological solutions.

The technical office, together with the commercial and marketing department, works daily in the development of new technologies, products and services to fully satisfy customer expectations and also to provide strategic market inputs. The heart of our business model is the Research & Development and we are constantly committed to integrate sustainability and development.



for **innovation**



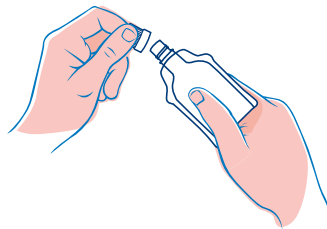
# 8 SOLUTIONS

# FOR ANYONE



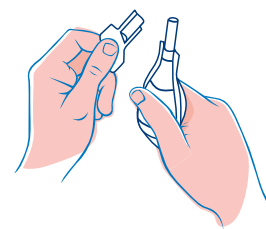
## SQUEEZABLE

Squeezable solutions for liquid & semi-dense products



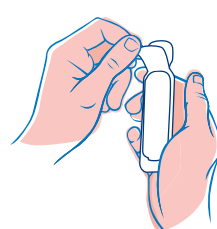
## SQUEEZABLE WITH CAP

Squeezable solutions with cap for liquid & semi-dense products



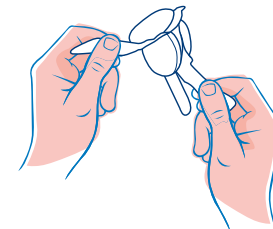
## SQUEEZABLE WITH STRAW

Squeezable solutions with straw for liquid products



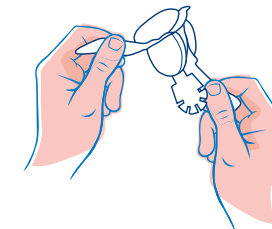
## PEELABLE

Peelable solutions for products that solidify after the filling



## PEELABLE WITH SYMMETRICAL STICK

Peelable solutions with symmetrical stick for products that solidify after the filling and eatable as an ice-cream or lollipop



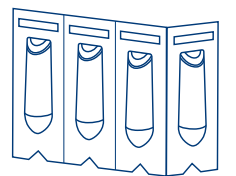
## PEELABLE WITH ASYMMETRICAL STICK

Peelable solutions with asymmetrical stick for products that solidify after the filling and eatable as an ice-cream or lollipop



## QWIKPAK

QwikPak, the solution that smartly combines the advantages of pouches and bottles



## SUPPOSITORIES & OVULES

Solutions for Suppositories and Ovules





# SOLUTIONS FOR FOOD & NON-FOOD APPLICATIONS

UNIFILL mission is to provide safe, innovative and sustainable packaging solutions. Thanks to our technology, we can produce light and flexible portion-packs that, compared to traditional containers, give the customer advantages in terms of cost saving and food waste. UNIFILL serves both the Food and the Non-Food industry guaranteeing flexibility, quality, reliability and 100% tailor-made solutions.



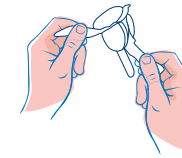
for a **break**

SOLUTIONS  
FOR **DAIRY**  
**UNIFILL**

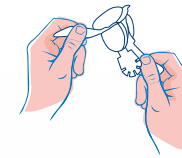
UNIFILL has developed, over the years, innovative solutions for dairy applications. Today our technology is applied on a wide range of products such as: processed cheese, yoghurt, fromage frais, butter, margarine etc. that can be packed in 100% tailor-made portion-packs. With our technology, you can produce both "peelable" portion-packs, for products that solidify after the filling and "squeezeable" portion-packs, ideal for products that remain liquid or semi-dense after the filling. You can also add several options such as: symmetrical or asymmetrical stick to obtain a product that can be eaten as a lollipop or an ice cream (ideal for kids' market), or caps for re-closable packages.



PEELABLE



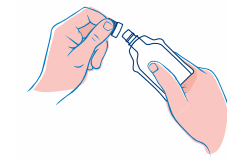
PEELABLE WITH SYMMETRICAL STICK



PEELABLE WITH ASYMMETRICAL STICK



SQUEEZABLE



SQUEEZABLE WITH CAP

SOLID YOGHURT WITH STICK  
CONDENSED MILK  
BUTTER OR MARGARINE

CHEESE WITH STICK  
DRINKABLE YOGHURT  
PROCESSED CHEESE







for **sweetness**

SOLUTIONS  
FOR **CONFECTIONERY**  
**UNIFILL**

UNIFILL has developed, over the years, innovative solutions for confectionery applications. Today our technology is applied on a wide range of products such as: hard chocolate, spreadable chocolate, marmalade, jam, jelly etc. that can be packed in 100% tailor-made portion-packs. With our technology, you can produce both "peelable" portion-packs, for products that solidify after the filling and "squeezable" portion-packs, ideal for products that remain liquid or semi-dense after filling. You can also add several options such as symmetrical or asymmetrical stick, to obtain a product that can be eaten as a lollipop or an ice cream (ideal for kids' market).



PEELABLE



PEELABLE WITH SYMMETRICAL STICK



PEELABLE WITH ASYMMETRICAL STICK



SQUEEZABLE

CHOCOLATE WITH STICK  
SPREADABLE CHOCOLATE

JAM/JELLY WITH STICK  
SPREADABLE JAM





for a **special taste**

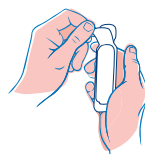
SOLUTIONS  
FOR **CONDIMENTS**  
**UNIFILL**

UNIFILL has developed, over the years, innovative solutions for sauces and dressings applications. Today our technology is applied on a wide range of products such as: olive oil, edible oils, vinegar, ketch-up, mayonnaise, spreadable pates, ethnic sauces, etc. that can be packed in 100% tailor-made portion-packs. For this kind of applications you can produce both "squeezable" and "peelable" portions-packs or the innovative QwikPak, the solution that smartly combines the advantages of pouches and bottles with filling volumes from 100ml up to 500ml.

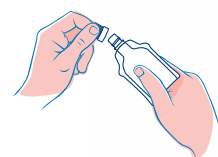
- OLIVE OIL / VINEGAR
- SAUCES & DRESSINGS
- ETHNIC SAUCES



SQUEEZABLE



PEELABLE



SQUEEZABLE  
WITH CAP



QWIKPAK



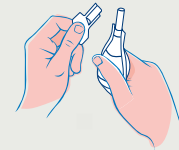


for your **well-being**

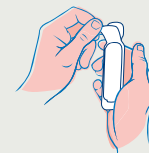
SOLUTIONS  
FOR **PHARMA**  
& **NUTRACEUTICAL**  
**UNIFILL**



SQUEEZABLE



SQUEEZABLE  
WITH STRAW



PEELABLE



SUPPOSITORIES  
& OVULES

UNIFILL technology is particularly suitable for the packing of pharmaceutical and nutraceutical liquid and semi-dense products (OTC) such as: cough syrups, vitamins and supplements, energy drinks, ointments, pain-relief creams, toothpastes, mouth washers etc. that can be packed in 100% tailor-made portion-packs. Compared to the traditional glass containers and the multi-use packaging, the production of drinkable medicines into disposable portion-packs offers economical and practical advantages since the end-user will always have at hand the correct dose to use in a practical, resistant and sustainable single-dose container. UNIFILL machines are made with the utmost care in accordance with the latest GMP regulations and, if required, they can be equipped with an ultra-clean package to improve machine hygienic conditions. With our technology you can produce both "squeezable" portions-packs, for products that remain liquid or semi-dense after the filling and "peelable" portion-packs, ideal for products that solidify after the filling to include suppositories and ovules. It is also possible to obtain an innovative container with straw (UNIFILL patented system).

OTC DRINKS & VITAMINS

SUPPOSITORIES

NUTRACEUTICAL JELLY

DRINKABLE WITH STRAW

SYRUPS

VITAMINS





for a **boost of energy**

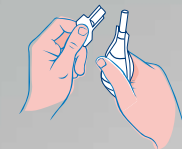
# SOLUTIONS FOR **BEVERAGE** UNIFILL



SQUEEZABLE



SQUEEZABLE  
WITH CAP



SQUEEZABLE  
WITH STRAW



QWIKPAK

UNIFILL technology is particularly suitable for beverages applications such as: drinkable vitamins, concentrated drinks, energy drinks, alcohol drinks etc. that can be packed in 100% tailor-made portion-packs. Compared to the traditional glass containers and the multi-use packaging, the production of beverages into disposable portion-packs offers economical and practical advantages since the end-user will always have at hand the correct dose to use in a practical, resistant and sustainable single-dose container. UNIFILL machines are made with the utmost care in accordance with the latest GMP regulations and, if required, they can be equipped with an ultra-clean package to improve machine hygienic conditions. With our technology you can produce both "squeezeable" portion-packs (with or without cap) or the QwikPak bottle, the solution that smartly combines the advantages of pouches and bottles with filling volumes from 100ml up to 500ml. It is also possible to obtain an innovative container with straw (UNIFILL patented system).

SPORT DRINKS	CONCENTRATED DRINKS
DRINKABLE VITAMINS	SYRUPS
HERBAL DRINKS	ALCOHOL DRINKS



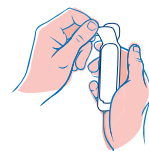


for **protection**

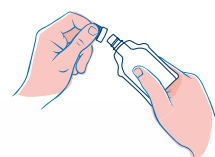
SOLUTIONS  
FOR **CHEMICAL**  
**UNIFILL**



SQUEEZABLE



PEELABLE



SQUEEZABLE  
WITH CAP



QWIKPAK

A wide range of chemical applications is currently produced with UNIFILL machines such as: fertilizers, insects repellents, ambient perfumes, car & ambient perfumes with slow-release membrane, detergents, softeners etc. With our technology you can produce "squeezable" portion-packs, with or without cap, or the innovative QwikPak, the solution that smartly combines the advantages of pouches and bottles with filling volumes from 100ml up to 500ml. The system also allows the production of special containers made of two different plastic materials featuring one thermoformed side and one flat side, made of a thinner plastic membrane covered by a special peel-off leaf, for a gradual release of aromas and perfumes.

FERTILIZERS

INSECTS REPELLENTS

DETERGENTS





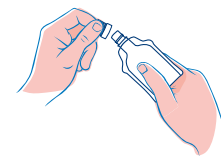
for your **beauty**



SQUEEZABLE



QWIKPAK



SQUEEZABLE  
WITH CAP

SOLUTIONS  
FOR **PERSONAL CARE**  
& **COSMETIC**  
**UNIFILL**

Thanks to the possibility to perfectly mimic the shape of primary bottles on small stand-up and non stand-up unit doses, UNIFILL technology is particularly suitable for body-care applications. Contrary to conventional horizontal systems, the UNIFILL vertical technology allows the thermoforming of both sides of the shape, giving the possibility of filling the package at almost 100% of its volume capacity. The system is ideal for different products such as: shampoo, hair conditioner, bath/shower gels, lotions, creams, gels, pigments, perfumes, soaps, etc. It is also possible to hot fill and pack glycerin-based soaps, that solidify after the filling at ambient temperature, into "peelable" portion-packs, thus eliminating an entire processing cycle.

SOAPS

BODY CREAMS

SHAMPOO-SHOWER GELS





for a **fresh journey**

SOLUTIONS  
FOR **AUTOMOTIVE**  
**UNIFILL**

UNIFILL technology is particularly suitable for automotive applications and a wide range of chemical products are presently packed into unit-doses such as: car detergents, car perfumes, motor oils, windscreen liquid, polish creams etc. With our technology you can produce "squeezable" portion-packs, with or without cap, or the innovative QwikPak, the solution that smartly combines the advantages of pouches and bottles with filling volumes going from 100ml up to 500ml. The system also allows the production of special containers made of two different plastic materials featuring one thermoformed side and one flat side, made of a thinner plastic membrane covered by a special peel-off leaf, for a gradual release of aromas and perfumes.

CAR DETERGENTS

CAR PERFUMES

MOTOR OILS



PEELABLE



SQUEEZABLE



SQUEEZABLE  
WITH CAP



QWIKPAK





for their **health**

SOLUTIONS  
FOR **PET CARE**  
**UNIFILL**

UNIFILL technology is particularly suitable for pet-care applications and, compared to conventional horizontal systems, UNIFILL vertical technology allows the thermoforming of both sides of the shape giving the possibility of filling the package at almost 100% of its volume capacity. The system is ideal for several products such as: ticks & fleas' treatments, spot-on creams, supplements, vitamins, cats & dogs' shampoo etc. and it is possible to produce both "peelable" portion-packs, for products that solidify after the filling and "squeezeable" portions-packs, ideal for products that remain liquid or semi-dense after the filling.

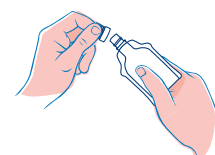
CATS & DOGS SHAMPOO  
SUPPLEMENTS  
TICKS & FLEAS TREATMENTS



SQUEEZABLE



PEELABLE



SQUEEZABLE  
WITH CAP



QWIKPAK







FROM THE  
**IDEA**  
DEVELOPMENT  
TO THE MACHINES  
**DESIGN**

UNIFILL designs and manufactures unique systems that allow the thermoforming, the filling, the sealing and the shape-cutting of unique portion-packs starting from a single reel of plastic material. This technology is a smart combination of Blow Molding and Form Fill & Seal technologies. The UNIFILL R&D department provides a complete technical assistance throughout all project phases and we are at customer's side from the selection of an innovative container, that will make your product and your brand exclusive and recognizable, to the final configuration of the machine based on customer's requirements. The flexible and dynamic organization is the key strength of UNIFILL's success. All our technologies are equipped with a remote-control system that allows the constant monitoring of the installed machine.

# TECHNOLOGY FOR THERMOFORM FILL & SEAL

**UNIFILL**

## TF-K

Cycles/min	15
Filling range	1 - 100 ml
Thermoforming area	160 mm (w) - 120 mm (h)



## TF-K/HS

Cycles/min	Up to 35
Filling range	1 - 100 ml
Thermoforming area	160 mm (w) - 120 mm (h)

## TF-02

Cycles/min	Up to 35
Filling range	1 - 250 ml
Thermoforming area	300 mm (w) - 150 mm (h)



## TF-03

Cycles/min	20 - 30
Filling range	100 - 500 ml
Thermoforming area	350 mm (w) - 220 mm (h)



## TF-400 - QWIKPAK

Cycles/min	Up to 25
Filling range	100 - 500 ml
Thermoforming area	400 mm(w) - 220 mm(h)



# TECHNOLOGY FOR SUPPOSITORIES

**UNIFILL**

## RESNOVA 15 / RESNOVA 35

Filling Range	0.2 - 4 ml
Output/Hour	Up to 18.000 (with 1 cooling tunnel) Up to 24.000 (with 2 cooling tunnels) Up to 35.000 (with 3 cooling tunnels)



Starting from the end of the 90ies, UNIFILL presented the unique benefits of paper combined with our technology, thus representing an excellent solution for the environmental sustainability.

## Less Energy

UNIFILL offers the possibility to produce a portion-pack made of eco-friendly material (paper-based) with low environmental impact.

## Easily Recyclable

Paper is fully recyclable and thermoforming this material means responsibility and give a huge contribution to environmental respect. UNIFILL is now going in this direction and it is ready to play a leading role also in paper solutions.

## Low Carbon

UNIFILL fully support the low-fossil-fuel economy (LFFE), believing that it is possible to have a profitable economy also using low carbon power sources that could bring substantial benefits also in developed industries.

## Less Plastic

Less plastic means not something missing but, on the contrary, it means something more and, in particular, more is referred to industrial development, sustainability, circular economy and environmental respect.



for **sustainable solutions**

THE GROWTH OF  
OUR CUSTOMERS'  
**BUSINESS**  
IS OUR PRIORITY  
SINCE 1979

**UNIFILL**  
LEADING THERMOFORMING TECHNOLOGY

for their **growth**





**UNIFILL S.r.l.** | Via Aldo Moro, 68-74-80 | 41030 Bomporto (Modena) - Italy | tel. +39 059 909928 | fax +39 059 8178019

**[www.unifill.it](http://www.unifill.it)**